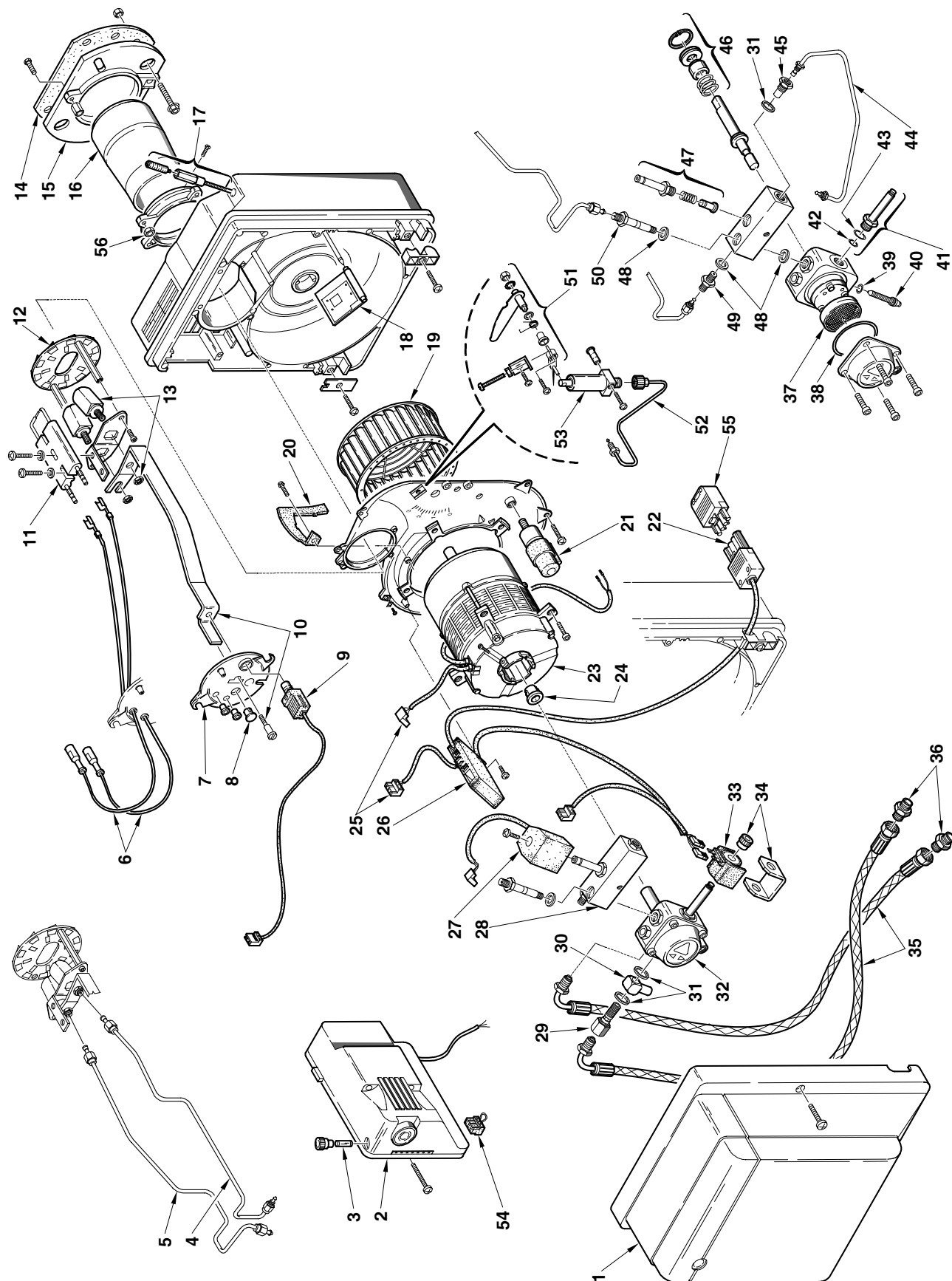


Bruciatore di gasolio • Light oil burner • Brûleur fioul domestique • Öl-Gebläsebrenner
Stookoliebrander

Gulliver RG5D TL

COD. **3739857**

TIPO/TYP/TYP **398T1**



N.	COD.	DESCRIZIONE	DESCRIPTION	DESCRIPTION	BESCHREIBUNG	BENAMING
1	3008558	COFANO	COVER	CAPOT	VERKLEIDUNG	BRANDERKAP
2	3001168	APPARECCHIATURA 550SE	CONTROL BOX 550SE	BOITE DE CONTROLE 550SE	STEUERGERÄT 550SE	CONTROLEDOOS 550SE
3	3007396	FUSIBILE	FUSE	FUSIBLE	SCHMELZSICHERUNG	ZEKERING
4	3008838	TUBO	TUBE	TUYAU	DRUCKROHR	DRUKLEIDING
5	3008837	TUBO	TUBE	TUYAU	DRUCKROHR	DRUKLEIDING
6	3008836	COLLEGAMENTO A.T.	HIGH VOLTAGE LEAD	CABLE HAUTE TENSION	ZÜNDKABEL	HOOGSPANNINGSKABEL
7	3008562	COPERCHIO	COVER	COUVERCLE	DECKEL	DEKSEL
8	3007458	VETRINO	VIEWING PORT	REGARD	SCHAUGLAS	KIJKGLAS
9	3007492	FOTORESISTENZA	P.E. CELL	CELLULE PHOTORESISTANCE	FOTOWIDERSTAND	FOTOCEL
10	3020104	STAFFA E VITE	BRACKET AND SCREW	SUPPORT ET VIS	TRAGBÜGEL UND SCHRAUBE	DRAAGBEUGEL EN SCHROEF
11	3007495	GRUPPO ELETTRODI	ELECTRODE ASSEMBLY	GROUPE ELECTRODES	ELEKTRODESYSYSTEM	ELECTRODENGROEP
12	3008559	ELICA	DIFFUSER DISC	ACCOCHE FLAMME	STAUSCHEIBE	VLAMHOUDER
13	3008560	PORTAUGELLO	NOZZLE HOLDER	PORTE GICLEUR	DÜSENSTOCK	SPROEIERHOUDER
14	3005813	SCHERMO	GASKET	JOINT	FLANSCHDICHTUNG	DICHTING
15	3005814	FLANGIA	FLANGE	BRIDE	FLANSCH	FLENS
16	3008835	TUBO FIAMMA	FLAME TUBE	GUEULARD	FLAMMENDRUCKROHR	BRANDERKOP
17	3007648	REG. SERRANDA 2° STADIO	2 nd STAGE AIR DAMPER REG.	REG. VOLET D'AIR 2 ^{ème} ALLURE	2. ST. LUFTKLAPPENREGLER	REG. LUCHTKLEP 2de VLAM
18	3008497	SERRANDA	AIR DAMPER	VOLET AIR	LUFTKLAPPE	LUCHTKLEP
19	3008494	GIRANTE	FAN	VENTILATEUR	GEBLÄSERAD	VENTILATOR
20	3008552	CONVOGLIATORE	SUCTION DUCT	CONVOYEUR D'AIR	LUFTLEITBLECH	LUCHTGELEIDER
21	3008499	CONDENSATORE 8 µF	CAPACITOR 8 µF	CONDENSATEUR 8 µF	KONDENSATOR 8 µF	CONDENSATOR 8 µF
22	3006949	PRESA A 4 POLI	4 POLE SOCKET	PRISE 4 POLES	4 - POLIGE STECKDOSE	4 - POLIGE STOPCONTACT
23	3008506	MOTORE	MOTOR	MOTEUR	MOTOR	MOTOR
24	3000443	GIUNTO	JOINT	ACCOUPLMENT	KUPPLUNG	KOPPELING
25	3007454	PRESA	SOCKET	PRISE	STECKDOSE	VR. STEKKER
26	3008983	RITARDAT. ELETTRONICO	ELEC.START DELAYNG DEV.	RETARDATEUR ELECTR.	ELEKTR. VERZÖGERER	ELECTR. VERTRAGER
27	3008575	BOBINA	COIL	BOBINE	MV SPULE	SPOEL
28	3008569	GRUPPO CORPO VALVOLA	VALVE BODY SYSTEM	GROUPE CORPS VANNE	VENTILKÖRPERSYSTEM	VENTIELGROEP
29	3005804	PERNO	SCREW	VIS CREUSE	HOHLKERNSCHRAUBE	HOLLE BOUT
30	3005805	RACCORDO	CONNECTOR	MAMELON	NIPPEL	NIPPEL
31	3007079	GUARNIZIONE	SEAL	JOINT	DICHTUNG	PAKKING
32	3008570	POMPA	PUMP	POMPE	PUMPE	POMP
33	3007565	BOBINA	COIL	BOBINE	MV SPULE	SPOEL
34	3007566	MANTELLINO E POMELLO	SHELL AND KNOB	ETRIER ET ECROU	BÜGEL UND KNOPF	BEUGEL EN MOER
35	3005720	TUBO FLESSIBILE	FLEXIBLE OIL LINE	FLEXIBLE	SCHLAUCH	FLEXIBEL
36	3009068	RACCORDO	CONNECTOR	MAMELON	NIPPEL	NIPPEL
37	3005719	FILTRO	FILTER	FILTRE	FILTER	FILTER
38	3007162	ANELLO OR	O - RING	JOINT TORIQUE	O - RING	DICHTING O - RING
39	3007028	ANELLO OR	O - RING	JOINT TORIQUE	O - RING	DICHTING O - RING
40	3007202	REGOLATORE	REGULATOR	REGULATEUR	REGLER	REGELAAR
41	3007582	VALVOLA	NEEDLE VALVE	VANNE	NADELVENTIL	VENTIEL
42	3007156	ANELLO OR	O - RING	JOINT TORIQUE	O - RING	DICHTING O - RING
43	3007173	ANELLO OR	O - RING	JOINT TORIQUE	O - RING	DICHTING O - RING
44	3008574	TUBO	TUBE	TUYAU	ROHR	LEIDING
45	3008571	RACCORDO	CONNECTOR	MAMELON	NIPPEL	NIPPEL
46	3000439	ORGANO DI TENUTA	PUMP SEAL	ORGANE D'ETANCHEITE	WELLENDICHTUNG	ASDICHTING
47	3005733	VALVOLA	NEEDLE VALVE	VALVE	NADELVENTIL	VENTIEL

